

# TRANSFER STATION COMPACTOR MODELS 12084T6 AND 12084T7

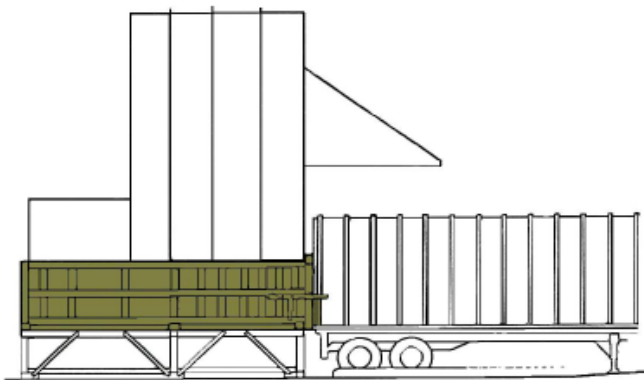
A successful Transfer Station starts with the right equipment. Only the "Compactor People" can offer you a high performance machine built to take the demands of such an application.



All *SEBRIGHT* products are built to deliver above average performance with lower maintenance costs and a longer in-service life!

- Consistently larger payloads
- Reduced labor/fuel costs
- Cleaner Operation

Call Toll Free  
**800-253-0532**

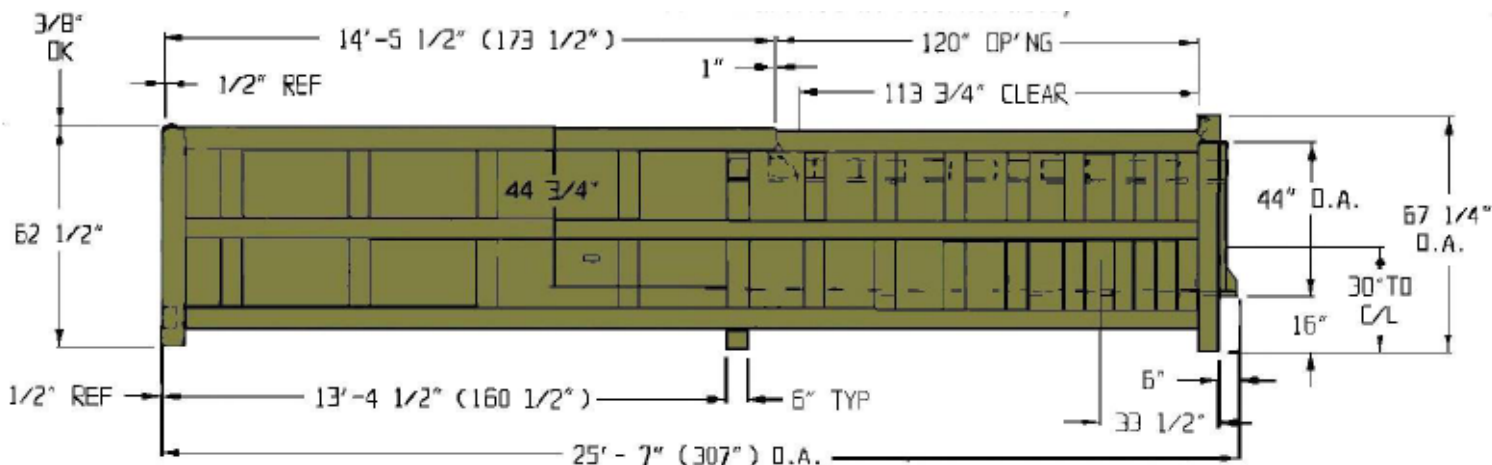


Compactor and stand in position with Transfer Trailer

**Sebright Prouducts, Inc.**  
127 N. Water St.  
Hopkins, MI 49328



## THE DENSIFICATION SPECIALIST



## Transfer Station Compactor Specifications

Note: The tables below show the Differences in the Two Models

Model	Factory Rating	Industry Rating	Motor HP @ 1725 RPM	Pump GPM @ 1725 RPM	Reservoir Capacity	No. of Hydraulic Cylinders	Hyd. Cyl. Bore Diam	Hyd. Cylinder Stroke	Hyd. Cyl. Rod Diameter	Normal PSI	Max PSI	Normal Ram Force	Max Ram Force	Ram Face Dimensions
12084T6	9 cu. yd	6.6	50 HP	85 gpm	300 US Gallons	2	6 inches	146 inches	4.5 inches	1800 psi	2150 psi	101,790 lbs.	121,583 lbs.	30.5 in H x 84 in. W
12084T7	9 cu. yd	6.6	50 HP	130 gpm	300 US Gallons	2	7 inches	146 inches	4.5 inches	1800 psi	2150 psi	138,546 lbs.	165,486 lbs.	30.5 in H x 84 in. W

Model	Ram Face Area	Normal Ram Face PSI	Maximum Ram Face PSI	Normal Cycle Time	Cubic Yds/hr (Ind. Criteria)	Header Bar above ram	Discharge Opening	Ram Penetration	Clear Top Opening	Top Opening	Overall Height	Approx. Weight
12084T6	2,562 Sq. inches	40 psi	47.5 psi	36 seconds	655 cu. yds/hr	11 inches	44 in.H x 85 in. W	26 inches	80 in. W X 114 in. L	84 in. W x 120 in. L	67 inches	29,500 lbs.
12084T7	2,562 Sq. inches	54 psi	65 psi	38 seconds	630 cu. yds/hr	11 inches	44 in.H x 85 in. W	26 inches	80 in. W X 114 in. L	84 in. W x 120 in. L	67 inches	30,000 lbs.

**IF YOU MOVE WASTE --  
DO IT THE PROVEN AND  
EFFICIENT WAY WITH  
SEBRIGHT PRODUCTS**



**Sebright Products, Inc.**  
127 N. Water St., Hopkins, MI 49328  
Phone: 269-793-7183 Fax: 269-793-4022  
**Toll Free: 800-253-0532**  
www.sebrightproducts.com

Due to product improvements, the manufacturer reserves the right to alter, or amend, without notice, any of these dimensions.

All machines and accessories are primer coated and finish painted. Standard color chart available upon request.

**Complete Line of Solid & Wet Waste Handling Equipment Includes:**

*Stationary Compactors \* Self-Contained Compactors \* Precrushers \* Hydraulic Dumpers \* Densifiers \* Construction Compactors  
High Density Extruders \* Belt Filter Presses*

Copyright Sebright Products, Inc. 2005