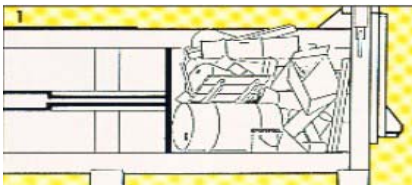


# SEBRIGHT MODEL PRE-CRUSHER



Exclusively designed to be an integral part of the compactor. Not an add-on or after thought. Ideal for **pallet, drum crushing, product destruction**, and to achieve maximum density. Built to take the abuses of high compaction forces.



Cylinder retracted / chamber loaded



Cylinder extended / material pre-crushed



Cylinder retracted / Results of pre-crushing

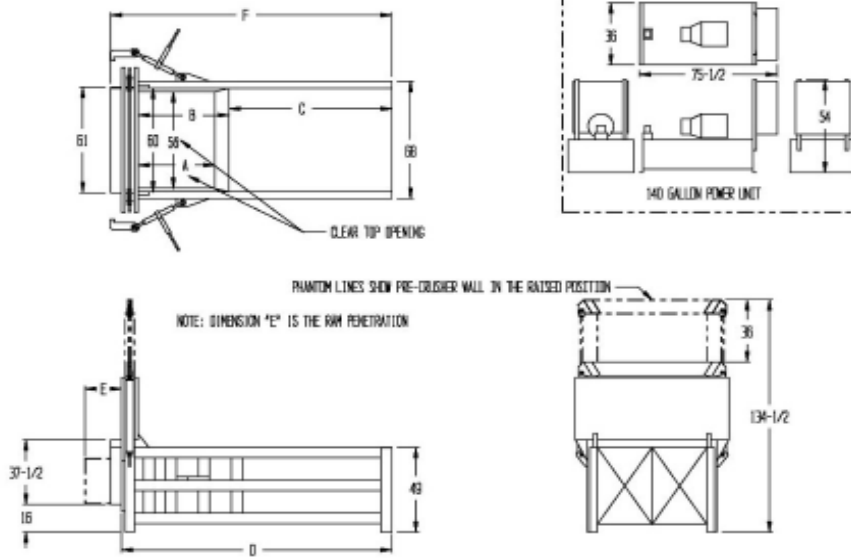
- Long Motor Life - T.E.F.C. (Totally Enclosed Fan Cooled)
- 5 Inch solid steel wall - with 2" thick steel guide plates on each side
- Stress designed support system. All above the chamber eliminating material from wedging in the guide tracks
- High Tech PLC driven control panel
- Option to by-pass the Pre-Crusher
- Extra heavy duty frame and ram - heavy structural plate with ship and car channel construction
- AR floor and sides (Abrasive Resistant AR 235 Alloy)
- Nylatron guide shoes; 3 shoes each side
- With a resultant ram force rating of up to 74 and 113,100#'s of compaction force, waste material is reduced to a fraction of the original volume
- Capable of crushing at one force and compacting at a different force setting

Call Toll Free  
**800-253-0532**

**Sebright Products, Inc.**  
127 N. Water St.  
Hopkins, MI 49328  
[www.sebrightproducts.com](http://www.sebrightproducts.com)



## THE DENSIFICATION SPECIALISTS



Model Number	"A"	"B"	"C"	"D"	"E"	"F"
5260PC	42	50	89	148	17	154
7460PC	63	71	113	194	20	200
9860PC	87	95	137	242	20	248
9860PCHV	87	95	137	242	20	248
10760PC	99	107	149	254	20	260

Model Number	Cu. Yd.	Motor Pump	Pump GPM	No. of Cyls.	Cyl. Bore	Cyl. Stroke	Max PSI	Ram Face Sq. In.	Resultant Ram Force	Cyl. Force	Cycle Time	Cu. Yd. Hour	Hyd. Reservoir Gal.	Base Unit Weight (lbs)
5260-1 PC	2	20	16/30	1	6	68	2,000	1,530	37	56,540	38	180	140	20,640
5260-2 PC	2	30	20/43	2	6	68	2,000	1,530	74	113,100	57	126.3	140	21,340
7460-1 PC	4	20	16/30	1	6	92	2,000	1,530	37	56,540	63	137	140	22,142
7460 HD PC	4	20	16/30	1	7	92	2,000	1,530	50	76,960	83	103	140	22,842
7460-2 PC	4	30	20/43	2	6	92	2,000	1,530	74	113,100	72	120	140	23,042
9860 PC	6	30	20/43	2	6	116	2,000	1,530	74	113,100	83	143	140	26,180
9860 PCHV	6	40	20/55	2	6	116	2,000	1,530	74	113,100	71	162	200	26,705
10760 PC	7	40	20/55	2	6	128	2,000	1,530	74	113,100	76	165	200	28,274



**Sebright Products, Inc.**  
 127 N. Water St., Hopkins, MI 49328  
 Phone: 269-793-7183 Fax: 269-793-4022  
**Toll Free: 800-253-0532**  
[www.sebrightproducts.com](http://www.sebrightproducts.com)

Due to product improvements, the manufacturer reserves the right to alter or amend, without notice, any of these specifications and/or dimensions.

All machines and accessories are primer coated and finish painted. Standard color chart available upon request.

**Complete line of Solid and Wet Waste Handling Equipment including:**

**Stationary Compactors \* Self-Contained Compactors \* Precrushers \* Hydraulic Dumpers \* Densifiers \* Construction Compactors  
 High Density Extruders \* Belt Filter Presses \* Conveyors**