

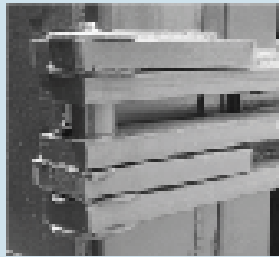
SEBRIGHT MODEL SC-4260 SELF CONTAINED COMPACTOR



PERFORMANCE
with a ram force exceeding 56,000 lbs.
waste is reduced to a fraction of its
original volume!



The 10 HP power unit is energy efficient featuring only brand name electrical and hydraulic components, along with a 12 gpm pump for high performance and a 36 gallon oil reservoir



The heavy-duty hinge is the strongest on the market place.



The ratchet latch tightens against the door seal and insures a tight seal.



The operator station includes: safety key lock, pull to start, push to stop, full container light, and can be mounted in any convenient location.

The Sebright Model SC-4260 is a compactor and container combined into a single efficient unit that has a built in sump with up to 1100 gallons of liquid retention capacity. Because the Model SC-4260 is designed to reduce in volume refuse that is wet, it is ideal for restaurants, supermarkets, and hospitals as well as any other location where the trash that is generated has a high amount of liquid.

The superior design and high quality workmanship of this unit along with its many built in features makes it your best value on the market today.

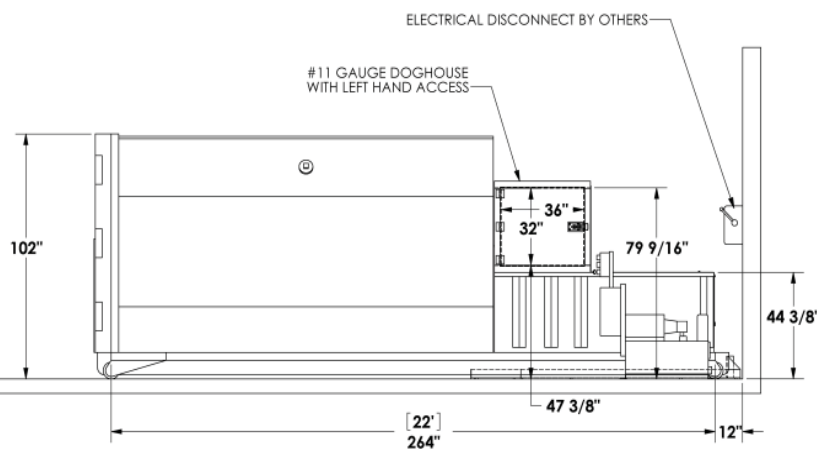
**Compactor/Leakproof
Container - *in one unit!***

The Densification Specialists

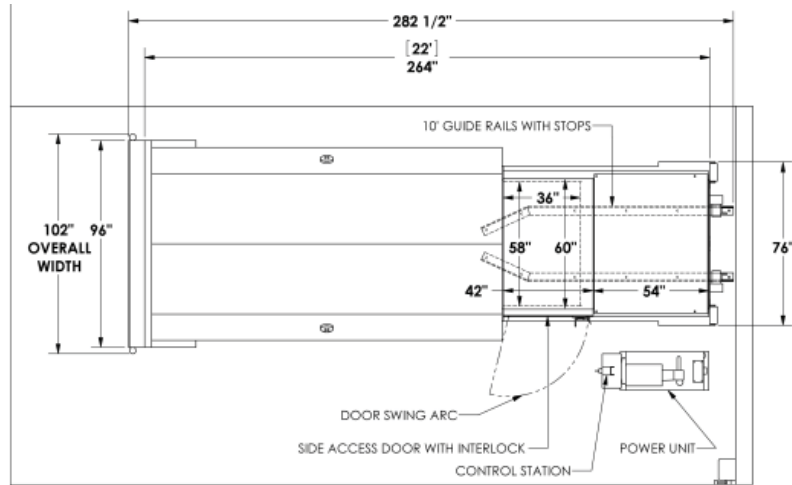
Call Toll Free
1-800-253-0532

Sebright Products, Inc.,
127 N. Water St.
Hopkins MI 49328





NOTE: ALL DIMENSIONS ARE IN INCHES



Model Number	Cu. Yd.	Motor Pump	Pump GPM	No. of Cyls.	Cyl. Bore	Cyl. Stroke	Max PSI	Ram Face Sq.In.	Ram Face PSI	Cyl. Force	Cycle Time	Cu. Yd. Hour	Ind. Criteria Rating	Base Unit Weight (lbs)
SC-4260	2	10	12	1	6	46	2,000	1,560	36.4	56,540	41	108	1.22	9,920

COMPACTOR & CONTAINER SPECIFICATIONS

Model	SC-4260-16	SC-4260-18	SC-4260-20	SC-4260-22	SC-4260-24
Total Nominal Cubic Yards	18	22	26	30	34
Compactor & Container - O.A. Length	17'	19'	21'	23'	25'
Container - O.A. Height	102"	102"	102"	102"	102"
Container - O.A. Width	96"/102"	96"/102"	96"/102"	96"/102"	96"/102"
Compactor Loading - Height	44 3/8"	44 3/8"	44 3/8"	44 3/8"	44 3/8"
Compactor Platform - O.A. Width	76"	76"	76"	76"	76"
Compactor & Container - Weight	7,895 lbs.	8,570 lbs.	9,245 lbs.	9,920 lbs.	10,595 lbs.
Remote Power Unit W/Oil - Weight**	700 lbs.*	700 lbs.*	700 lbs.*	700 lbs.*	700 lbs.*

*Weight is approximate

Compactor Container Structural Components

Compactor Floor (Reinforced AR-235.-Alloy).....	1/4"	Ram Top (Reinforced).....	1/4"
Compactor Side (Reinforced).....	3/16"	Container Floor.....	3/16"
Breaker Bar (Reinforced).....	L6X6x3/4"	Container Sides & Roof (Reinforced).....	10 ga.
Ram Floor (Reinforced).....	1/2"	Nylatron Guide Shoes.....	Std.
Ram Face (Reinforced).....	1/2"	Container Door (Reinforced).....	10 ga.
Main Rail Tubes.....	6x2x1/4" or Optional 6x2x3/8"		



Sebright Products, Inc
 Phone: 269-793-7183 ** Fax: 269-793-4022
 Toll Free: 800-253-0532
 www.sebrightproducts.com

Due to product improvement, the manufacture, reserves the right to alter or amend, without notice, any of these specifications and/or dimensions.

Complete Line of Solid & Wet Waste Handling Equipment includes:

*Stationary Compactors * Self Contained Compactors * Precrushers * Hydraulic Dumpers * Densifiers * Construction Compactors * High Density Extruders * Belt Filter Presses * Xtractors * Conveyors*

Sebright Products, Copyright 2007