
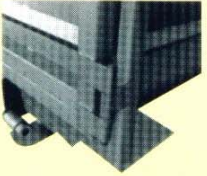
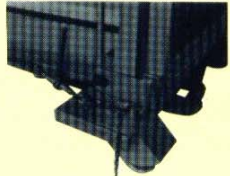
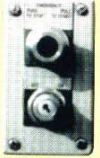


SEBRIGHT MODEL SC-3260



SELF CONTAINED COMPACTOR

The above SC 3260 has an octagonal container with standard understructure and an optional enclosed doghouse with side door and interlock.

POWER UNIT	HINGE	LATCH	CONTROL
			
The 10 HP power unit is energy efficient with only the best components available in it.	The heavy-duty hinge is the strongest on the market place.	The ratchet latch tightens against the door seal and insures a tight seal.	The operator station includes: safety key lock, pull to start, push to stop, full container light, and can be mounted in any convenient location

The Sebright Model SC-3260 is a compactor and container combined into a single efficient unit that has a built in sump with up to 1100 gallons of liquid retention capacity. Because the Model SC-3260 is designed to reduce in volume refuse that is wet, it is ideal for restaurants, supermarkets, and hospitals, as well as many other locations where trash that is generated has a high amount of liquid.

The superior design and high quality workmanship of this unit along with its many built in features makes it you best value on the market today.

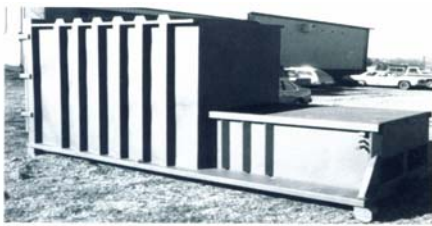
Call Toll Free
1-800-253-0532

Sebright Products, Inc.
127 N. Water St.
Hopkins, MI 49328
www.sebrightproducts.com

**COMPACTOR/LEAKPROOF
CONTAINER — IN ONE UNIT!**



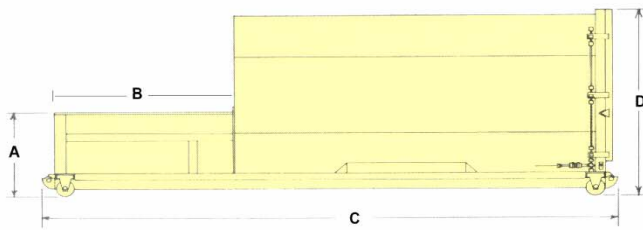
The Densifications Specialists



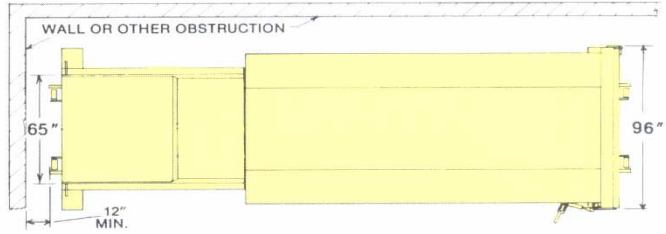
The above SC-3260 has a rectangle container with Dempster understructure.



The above SC-3260 has a round bottom container, standard understructure and an optional break away security chute.



SIDE VIEW



TOP VIEW

Model Number	Cu. Yd.	Motor Hp	Pump GPM	No. of Cyls.	Cyl. Bore	Cyl. Stroke	Max PSI	Ram Face Sq. In.	Ram Face PSI	Cyl. Force	Cycle Time	Cu. Yd. Hour	Ind. Criteria Rating	Base Unit Weight (lbs)
SC-3260	1.3	10	12	1	5	48	2,000	1,240	31.6	39,270	34	106	1.0	9,750

COMPACTOR & CONTAINER SPECIFICATIONS

Model	SC-3260-16	SC-3260-18	SC-3260-20	SC-3260-22	SC-3260-24
Total Nominal Cubic Yards	16	20	24	28	32
Compactor & Container—O.A. Length (A)	17'6"	19'6"	21'6"	23'6"	25'6"
Container—O.A. Height	107"	107"	107"	107"	107"
Container—O. A. Width	96"	96"	96"	96"	96"
Compactor Loading—Height	48.5"	48.5"	48.5"	48.5"	48.5"
Compactor Platform—O.A. Width	65"	65"	65"	65"	65"
Compactor & Container –Weight	8,100#	8,775#	9,450#	9,750#	10,801#
Remote Power Unit w/Oil—Weight	300#	300#	300#	300#	300#

Compactor Container Structural Components

Compactor Floor (Reinforced AR-235).....	3/8	Ram Top (Reinforced)	1/4
Compactor Side (Reinforced).....	1/4	Container Floor	3/16
Breaker Bar Tube (Reinforced).....	L6x6x3/4	Container Sides & Roof (Reinforced).....	10
Ram Floor (Reinforced).....	1/2	Octagon Container Sides & Roof	3/16
Ram Face (Reinforced).....	1/2	Container Door (Reinforced).....	3/16
Main Rail Tubes.....	6x2x1/4		



Sebright Products, Inc.
 127 N. Water St., Hopkins, MI 48328
 Phone: 269-793-7183 Fax 269-793-4022
 Toll Free: 800-253-0532
 www.sebrightproducts.com

Due to product improvement, the manufacturer reserves the right to alter or amend, without notice, any of these specifications and/or dimensions.

All machines and accessories are primer coated and finished painted. Standard color chart available upon request.

Complete Line of Solid & Wet Waste Handling Equipment Includes:

*Stationary Compactors * Self-Contained Compactors * Precrushers * Hydraulic Dumpers * Densifiers * Construction Compactors
 High Density Extruders * Belt Filter Presses*