

SEBRIGHT HEAVY WEIGHTS

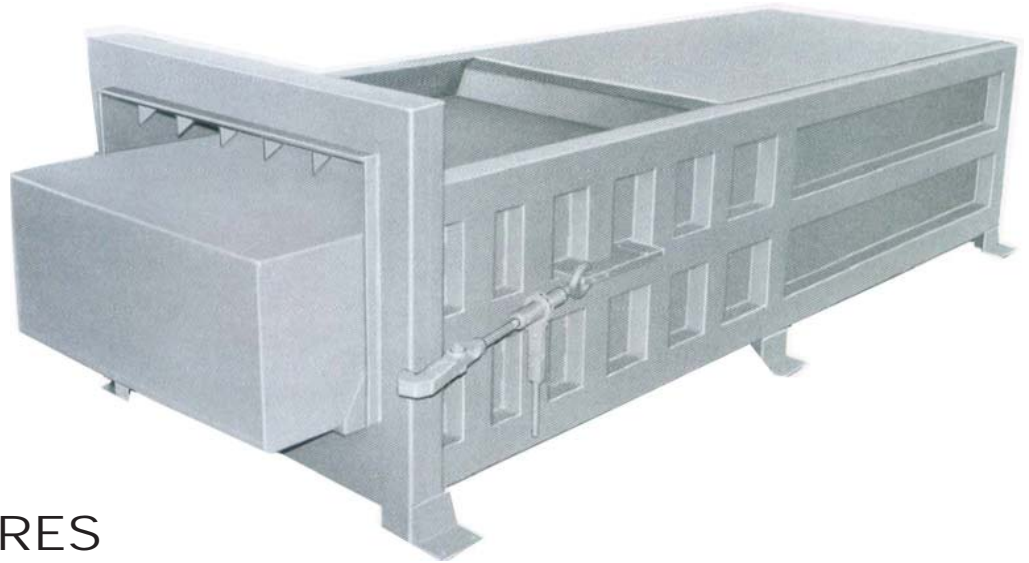
HIGH PERFORMANCE STATIONARY COMPACTORS

Designed and built to meet the demands of industrial and other larger volume applications.

High density can be achieved with the optional twin-cylinder models with forces in excess of 100,000 lbs.



Extra heavy duty frame and ram--heavy structural plate with ship and car channel construction.



STANDARD FEATURES

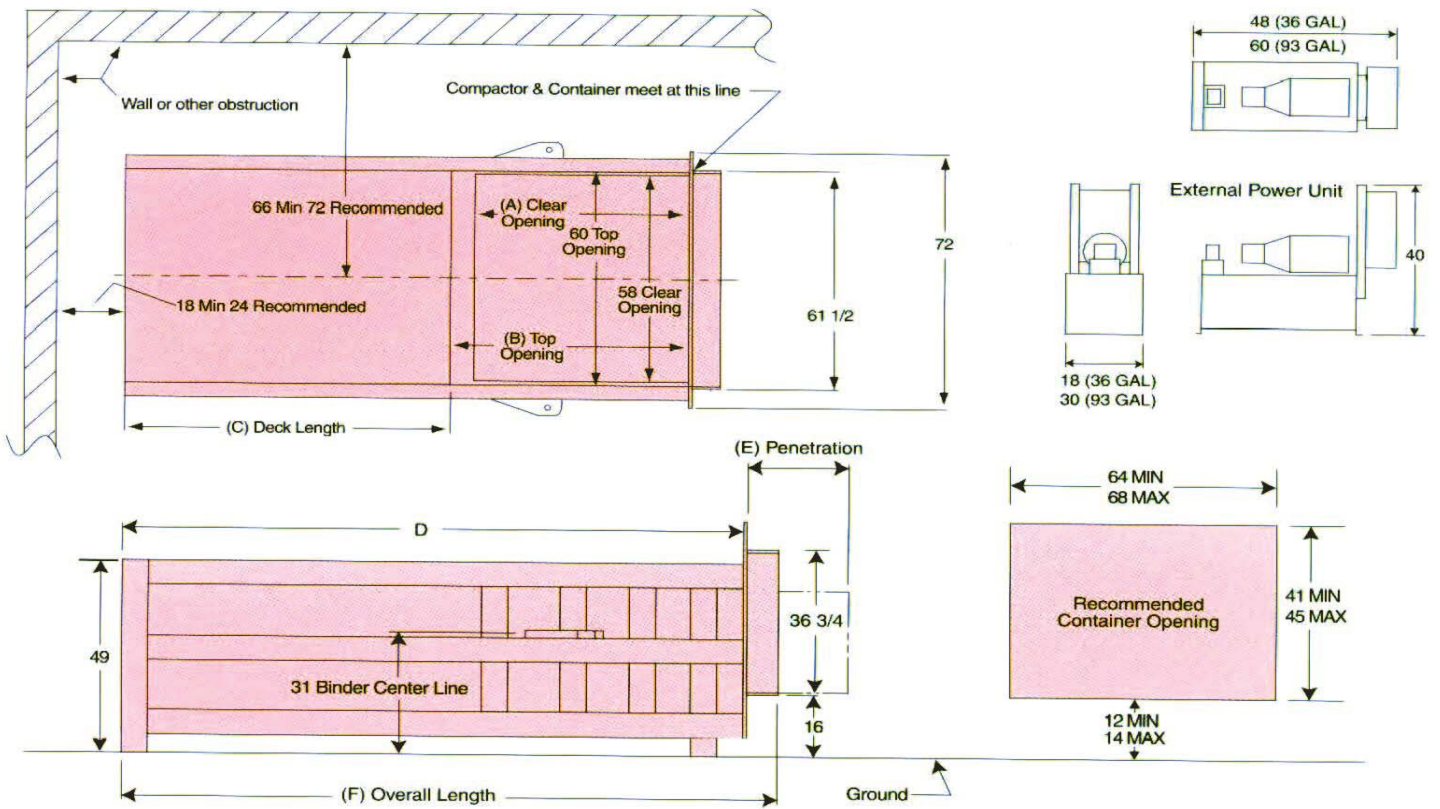
- Abrasive resistant floor (AR 235 alloy)
- U.L. Listed Panel/ANSI 245.2 Compliant
- Large clear top openings
- Large cylinder(s): 6", 7" or (2) 6" design
- Long motor life (Totally Enclosed Fan Cooled, T.E.F.C)
- Remote operator's station with container full light and keylock
- Liquid filled pressure gauge
- Auto cycle; emergency stop; deadman selector switch; multi-cycle
- Container centering guide
- Panel mounted jog controls
- Breaker bar teeth
- Ram position switch; safety retract start
- 6 point Nylatron ram guide system; 3 shoes each side riding on tube
- Generating compaction forces ranging from 56,550 to 113,100 lbs.

CALL TOLL FREE
800-253-0532

Sebright Products, Inc.
127 N. Water St.
Hopkins, MI 49328



THE DENSIFICATION SPECIALISTS



Model Number	"A"	"B"	"C"	"D"	"E"	"F"	CUBIC YARD	MOTOR HP	PUMP GPM	NO. OF CYLS	CYL BORE	CYL STROKE	MAX PSI	RAM FACE SQ IN	RESULTANT RAM FORCE	CYL FORCE	CYCLE TIME	CU YD HOUR	HYD. RESERVOIR GALS	BASE UNIT WEIGHT (LBS)
6060-XHD-2-6	52	60	83	143	15	151	3	15	19	2	6	68	2000	1530	74	113,100	76	82	60	9,585
6060-XHDHV-2-6	52	60	83	143	15	151	3	20	30	2	6	68	2000	1530	74	113,100	48	129	93	9,700
6560-XHD-2-6	57	65	83	148	10	156	3	15	19	2	6	68	2000	1530	74	113,100	74	90	60	9,625
6560-XHDHV-2-6	57	65	83	148	10	156	3	20	30	2	6	68	2000	1530	74	113,100	48	142	93	9,740
7460-1-6	66	74	114	188	25	196	4	15	19	1	6	92	2000	1530	37	56,550	51	153	60	10,200
7460-HD-1-7	66	74	114	188	25	196	4	15	19	1	7	92	2000	1530	50	76,960	77	102	60	10,380
7460-2-6	66	74	114	188	25	196	4	20	30	2	6	92	2000	1530	74	113,100	65	121	93	10,800
7460-HV-2-6	66	74	114	188	25	196	4	30	43	2	6	92	2000	1530	74	113,100	45	174	93	10,900
8260-1-6	74	82	114	196	17	204	5	15	19	1	6	92	2000	1530	37	56,550	51	172	60	10,872
8260-HD-1-7	74	82	114	196	17	204	5	15	19	1	7	92	2000	1530	50	76,960	77	114	60	10,975
8260-2-6	74	82	114	196	17	204	5	20	30	2	6	92	2000	1530	74	113,100	65	136	93	11,248
8260HV-2-6	74	82	114	196	17	204	5	30	43	2	6	92	2000	1530	74	113,100	45	195	93	11,348
9860-2-6	90	98	138	236	25	244	6	30	43	2	6	116	2000	1530	74	113,100	57	188	93	13,055
9860-HV-2-6	90	98	138	236	25	244	6	40	55	2	6	116	2000	1530	74	113,100	45	240	140	13,258
10660-2-6	98	106	138	244	17	252	7	30	43	2	6	116	2000	1530	74	113,100	57	204	93	13,166
10660-HV-2-6	98	106	138	244	17	252	7	40	55	2	6	116	2000	1530	74	113,100	45	261	140	13,369

Note: Sebright Power units feature tri-voltage motors, 208/230/460 volt, 3 phase. For 208 volt applications a 10 hp/12 gpm or 15 hp/16 gpm motor and pump combination is recommended. Special power units are also available for 230 volt single phase.



Sebright Products, Inc.
 127 N. Water St., Hopkins, MI 49328
 Phone: 269-793-7183 Fax: 269-793-4022
 Toll Free: 800-253-0532
 www.sebrightproducts.com



Due to product improvements, the manufacturer reserves the right to alter or amend, without notice, any of these specifications and/or dimensions.

All machines and accessories are primer coated and finished painted. Standard color chart is available upon request.

Complete Line of Solid & Wet Waste Handling Equipment Includes:

*Stationary Compactors * Self-Contained Compactors * Precrushers * Hydraulic Dumpers * Densifiers * Construction Compactors
 High Density Extruders * Belt Filter Presses * Conveyors*