



Horizontal auto-tie baler TYPE AVOS 1410 B5

Flexibility and throughput for individual applications

Horizontal baler type AVOS 1410 B5 is particularly suitable for the optimal compaction of expansive materials and common recyclables. It impresses with enormous versatility and numerous product options. The press ram is guided on steel rollers. When using the optimized cutting system "OptiCut", the throughput can be increased by another 50 percent. This allows a flexible use of the machine, depending on the application and the customer's need. The 5-fold binding guarantees dimensionally stable bales – even with expansive materials.

Optional high torque, slow speed shredder available, this allows for boxes up to 7' wide!

Sebright Products, Inc.
Hopkins, Michigan, 49328, US

Phone +1-269-793-7183 . Fax +1-269-793-4022
sebweb@sebrightproducts.com . www.sebrightproducts.com

**2020 OFFER : 90 DAY MONEY
BACK GUARANTEE**



Horizontal auto-tie baler TYPE AVOS 1410 B5-90/100

Horizontal auto-tie baler

TYPE AVOS 1410 B5

Technical data

Options

You specify the details –
for an optimal setup:

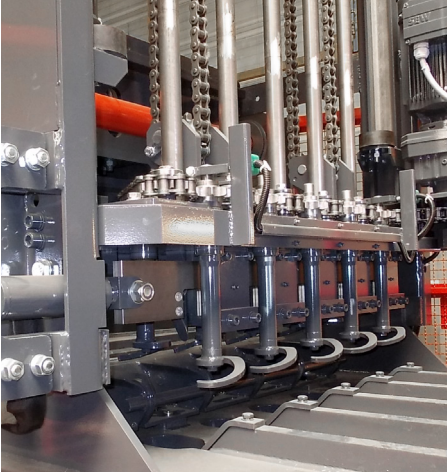
- › Avermann special press ram to compact "difficult" materials
- › Optimized cutting system "OptiCut"
- › Feeding conveyor for continuous filling
- › Cross binding
- › Size reducing shredder to allow for large box sizes in small opening

Your benefits:

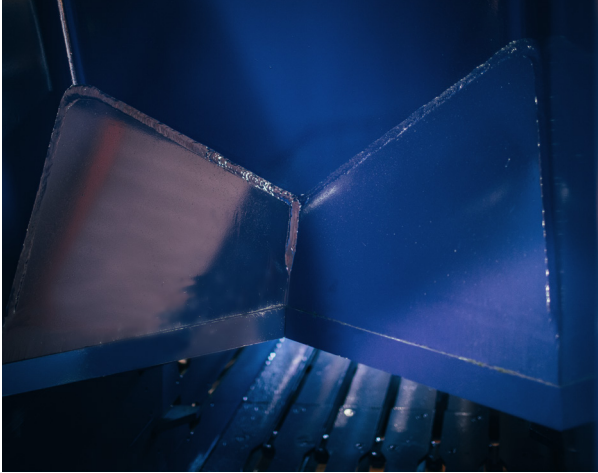
- › **Precise:** Dimensionally stable bales thanks to 5-fold vertical binding (using steel or plastic wires)
- › **Reliable:** Proven technology from more than 40 years of experience
- › **Versital:** Multiple configurations available

Industry leading warranty:

- › 3 years parts & labor included
- › Years 4 & 5 available for purchase



5-fold binding



OptiCut for better performance

Overview of technology

AVOS 1410 B5-45/80

Machine length	400 inches (33'4")
Machine width	95 inches (7'11")
Machine height	154 inches (12'10")
Feed opening	55 inches x 39 inches
Dead weight approx.	52,800 lbs.
Bale size (W x H)	43 inches x 29.5 inches
Bale weight* up to	1,430 lbs.
Channel adjustment	Three sides, automatic
Cycle time (empty)	16.7 s
Throughput @ 288 lbs/cubic yd, up to	17.6 t/h
Throughput @ 288 lbs/cubic yd, with OptiCut, up to	25t/h
Ram face psi	141 psi
Motor size	60 hp
Press force	180,000 lbs force
Cylinder size:	7" bore, 5" rod

* depending on bale length and material

Adjustable bale length; binding: 5-fold vertical; optional cross
binding: 5-fold vertical, 3-fold horizontal;
Electrical connection: 460 volt, 3 phase, 60 Hz

While Sebright Products, Inc. strives to make the information provided on processing of your waste or recycling stream, as timely and accurate as possible, the company makes no claims, promises, or guarantees about the accuracy, completeness, or adequacy of any of the provided information, and expressly disclaims liability for errors and omissions in the content of the information, or analysis provided to your company. It is solely the responsibility of each recipient of the information Sebright Products, Inc. has provided to satisfy itself as to the accuracy of the information provided by Sebright Products, Inc. and as to the efficacy of the product(s) for the use(s) intended.