

# 0.6 METER BELT FILTER PRESS SKID SYSTEM

High performance, compact dewatering system featuring a space saving walk around skid design.

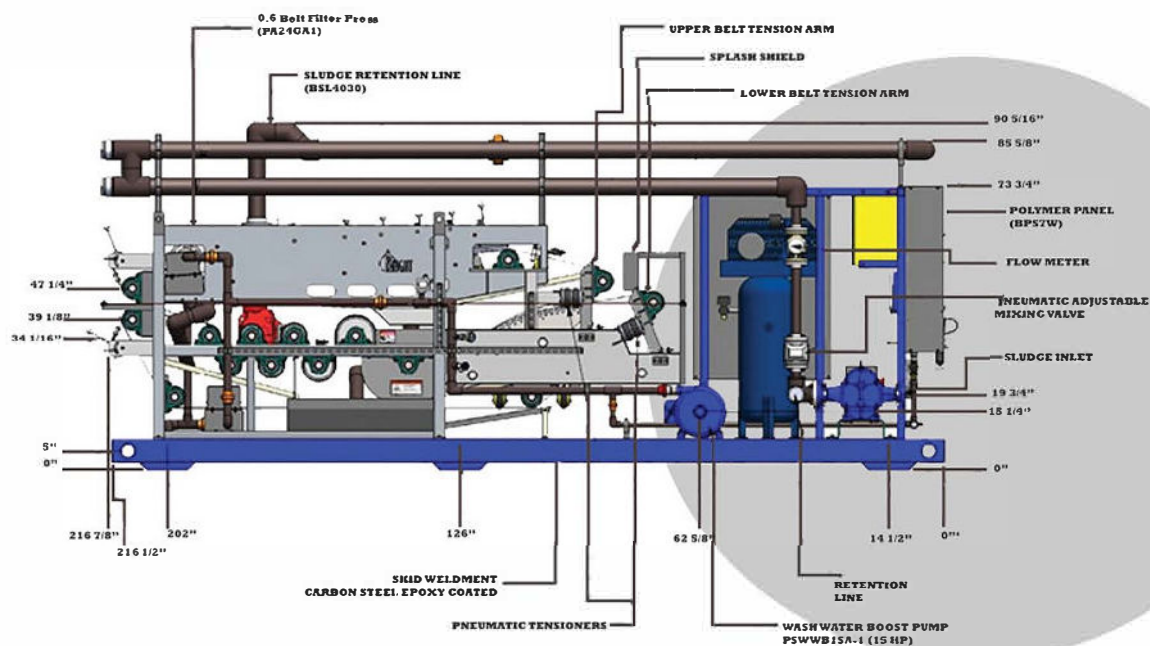


127 N. Water St. Hopkins, MI 49328  
800-253-0532  
[www.sebrightproducts.com](http://www.sebrightproducts.com)



# BELT FILTER PRESS 0.6 SKID SYSTEM

## Sebright Products Belt Filter Press Compact Skid System



### Features - 0.6 Meter Skid System

- 25-50 GPM production rate on most Biosolids
- Fully wired and plumbed for quick installation
- Stainless steel welded tube and channel frame
- Stainless steel rollers
- Patented high efficiency radius wedge zone
- 70 GPM maintain in place Boerger sludge pump
- 1.5 HP Sew Eurodrive gearmotor
- Allen Bradley controls with 10 inch touch screen
- Instant mix liquid polymer system
- Sludge retention (flocculation) pipes
- Stainless steel effluent collection sump
- Optional air compressor
- Optional sludge cake conveyor
- Optional sludge flow meter



If you need a high performance, compact dewatering system, our 0.6 Meter Belt Filter Press, may be the ideal solution for you.

A complete skid system has a footprint of 18.5' long x 5' wide. It takes up about the same space as one roll off dewatering box.

With a processing rate of up to 60 gpm, this unit can handle volume of up to 24,000 gallons per 8 hour shift. Cake solids typically range 16-30% on most municipal biosolids.

The system includes a belt press, control panel, pneumatic controls, booster pump, sludge pump and polymer system.