

HIGH DENSITY EXTRUDER

THE OPTIMUM DEWATERING SOLUTION FOR PAPER MILL WASTE STREAMS

- Dewater up to 43 yd³/hr (33m³/hr) of rejects & waste materials from Secondary Fiber & Virgin Pulp Systems
- No special metal detection equipment necessary
- No expensive wear parts



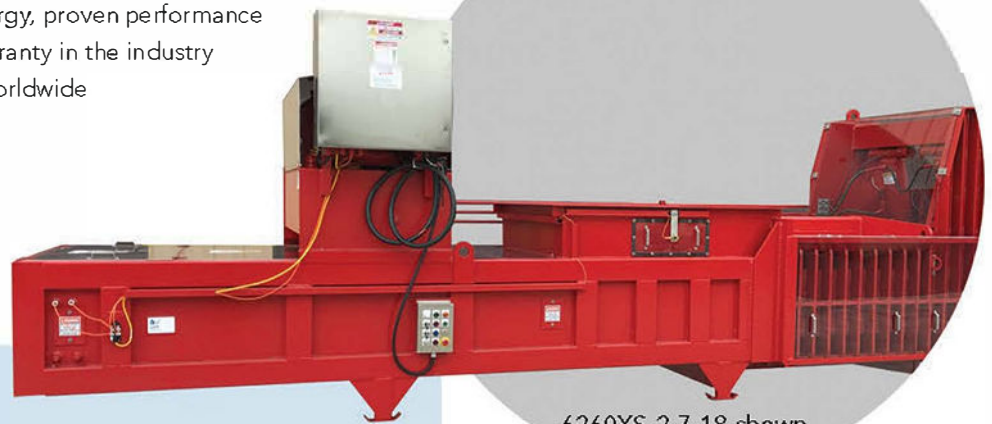
127 N. Water St. Hopkins, MI 49328
800-253-0532
www.sebrightproducts.com



HIGH DENSITY EXTRUDER

The paper industry's #1 choice for waste dewatering equipment

- Custom engineered systems & auxiliary equipment
- Rugged design, low energy, proven performance
- Backed by the BEST warranty in the industry
- Over 400 installations worldwide



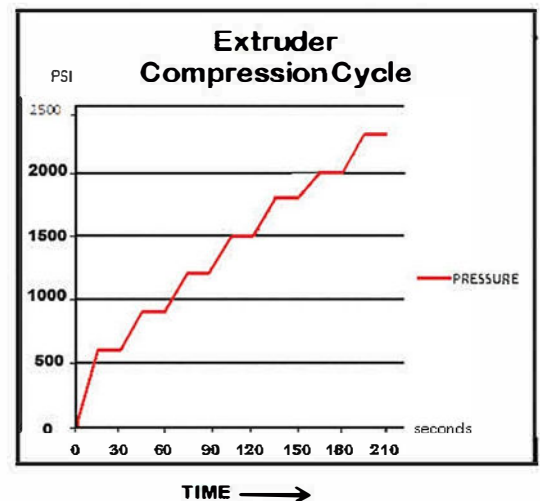
6260XS-2-7-18 shown

Features

- Extra heavy duty construction
- Times pressured management for superior dewatering
- Automated Dewatering Control System/ADCS
- Extra long, fully perforated dewatering chamber
- Self-relieving discharge, non-jamming design
- Customized auxiliary equipment to meet all your needs

Operational Benefits

- Dewater, compact and fill a refuse container with ONE machine
- Achieve final solids levels up to 70%
- Reduce waste disposal costs by over 50%
- Optimum performance compared to any press of its kind
- Convert wet waste into burnable fuel source
- Take control of safety & environmental liabilities



3024XS-1-7-14SS w/
a 5260-1-6 shown

Timed pressure management for superior dewatering performance

Only Bright Technologies offers the benefit of a time managed compression cycle. Incremental increase of the ram force over the time allows optimum dewatering performance. Others that use simple reciprocating ram cycles cannot achieve the superior results of the High Density Extruder.

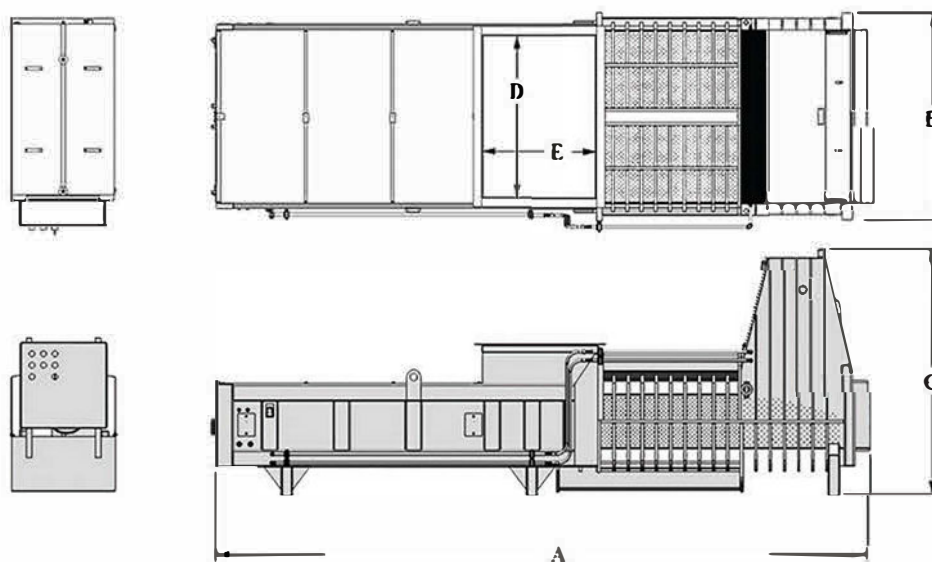
Proprietary PLC operated ADCS

Automated Dewatering Control System

Our PLC monitors & maintains both the compression ram and the discharge restrictor plate pressures. Proprietary control logic (ADCS) automatically controls the restrictor plate hydraulic pressure to allow material to discharge after dewatering and compression parameters are attained. This allows a wide range of material to be dewatered without additional operator attention.

HIGH DENSITY EXTRUDER

- Excellent leasing & rental options available
- ExIm Bank Financing available for International projects
- Onsite or lab material testing available upon request
- Export shipping & handling services



* All dimensional data for reference only
 * Due to product improvement, the manufacturer reserves the right to alter, or amend, without notice, any of these specifications and dimensions.

Dimensional Data and Specifications

Model	overall length A (in.)	overall width B (in.)	overall height C (in.)	feed chamber width D (in.)	feed chamber length E (in.)	chamber volume Yd ³ (M ³)
3024XS-1-7-14	192	37	72	24	30	.22 (.17)
4030XS-1-7-18	230	43	87	30	40	.46 (.35)
4060XS-2-7-18	230	73	87	60	40	.92 (.70)
6260XS-2-7-18	283	73	87	60	62	1.43 (1.09)
6260XS-3-7-24	306	73	92	60	62	1.92 (1.47)

Where can you find the High Density Extruder?

Graphic Packaging
 Sonoco Products
 Caraustar Industries
 Fabrica de Papei
 Greif Corp.
 Papelera del Sur
 Sonoco Brazil
 Sonoco Canada

Pratt Industries
 Lee & Man Paper
 Anhui Shanying Paper
 Chenming Paper
 Packaging Corp. of America
 Cascades
 Kimberly Clark Corp.
 Nine Dragons Paper

WestRock
 Georgia Pacific Corp.
 Huhtamaki
 Essity
 US Gypsum
 International Paper
 and many others...

While SebrightProducts, Inc., strives to make the information provided on processing of your waste or recycling stream, as timely and accurate as possible, the company makes no claims, promises or guarantees about the accuracy, completeness, or adequacy of any of the provided information, and expressly disclaims liability of errors and omissions in the content of the information, or analysis provided to your company. It is solely the responsibility of each recipient of the information Sebright Products, Inc., has provided to satisfy itself as to the accuracy of the information provided by Sebright Products, Inc., and as to the efficacy of the product(s) for the use(s) intended.