

# MINI TRANSFER STATIONS

PROCESS UP TO 285 CUBIC YARDS PER HOUR

Sebright Mini Transfer Station Compactors are engineered for specialty, lower-volume applications while maintaining the same rugged quality as our full-size units. Built with abrasion-resistant steel on the chamber floor and heavy-duty reinforcement, these compactors deliver long-lasting performance with minimal maintenance. Each unit is custom-engineered to your specifications and delivered with turnkey installation, ensuring a perfect fit for your unique operation.



127 N. Water St. Hopkins, MI 49328  
269-793-7183  
[www.sebrightproducts.com](http://www.sebrightproducts.com)

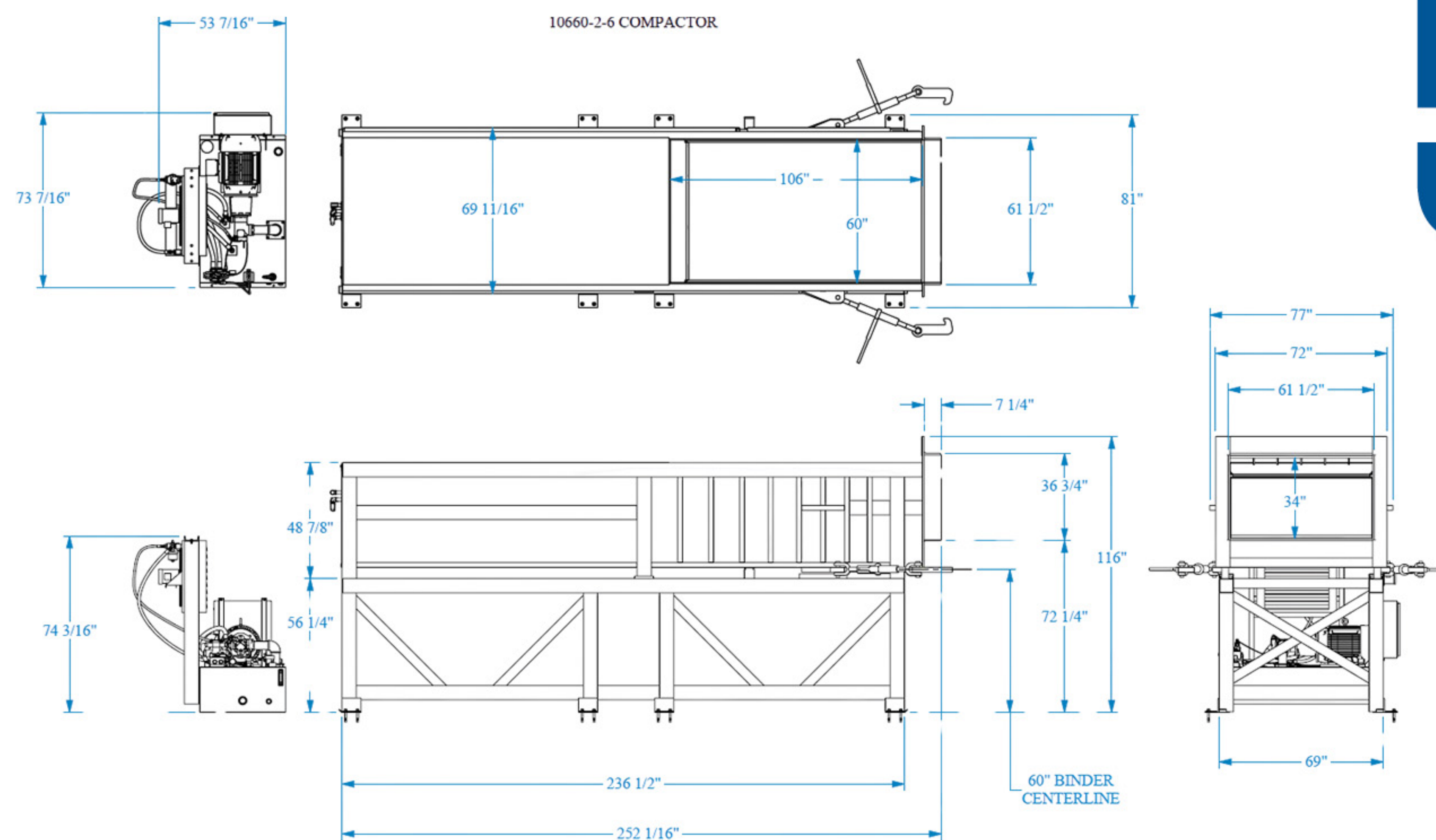




# MINI TRANSFER STATION

## Commercial - Municipal - Recycling

- Reduce costs with higher payloads - even in smaller spaces
- Ideal for lower-volume waste and recycling streams
- Heavy-duty reinforcement for long service life
- High ram penetration to reduce spillage
- Turnkey installation for a hassle-free set up
- Custom-engineered to match your specific material and site requirements



**5** limited **year**  
frame & ram warranty  
or 10,000 hrs

\* All dimensional data for reference only

\* Due to product improvement, the manufacturer reserves the right to alter, or amend, without notice, any of these specifications and dimensions.

Model	8880-2-6	9880-2-6	10680-2-6	13780-2-6
Factory rating	5 cu yd.	5.5 cu yd.	6 cu yd.	8 cu yd.
Motor HP	30 HP	30 HP	30 HP	30 HP
Pump GPM	45 GPM	45 GPM	45 GPM	45 GPM
Reservoir capacity	140 G	140 G	140 G	140 G
Hydraulic cylinders	(2) 6"	(2) 6"	(2) 6"	(2) 6"
Max PSI	2,000	2,000	2,000	2,000
Max ram force	113,100 lbs.	113,100 lbs.	113,100 lbs.	113,100 lbs.
Ram face	25.5" x 80"	25.5" x 80"	25.5" x 80"	25.5" x 80"
Max ram face PSI	55.4	55.4	55.4	55.4
Cycle time	56 seconds	56 seconds	56 seconds	72 seconds
Cubic yards/hr. (up to)	223	250	272	285
Discharge opening	37" x 81.5"	37" x 81.5"	81.5" x 25"	81.5" x 37"
Ram penetration	35"	25"	17"	16"
Clear top opening	80.5" x 76"	90" x 76"	98" x 76"	129" x 76"
Top opening	88" x 80"	98" x 80"	106" x 80"	137" x 80"

While Sebright Products, Inc., strives to make the information provided on processing of your waste or recycling stream, as timely and accurate as possible, the company makes no claims, promises or guarantees about the accuracy, completeness, or adequacy of any of the provided information, and expressly disclaims liability of errors and omissions in the content of the information, or analysis provided to your company. It is solely the responsibility of each recipient of the information Sebright Products, Inc., has provided to satisfy itself as to the accuracy of the information provided by Sebright Products, Inc., and as to the efficacy of the product(s) for the use(s) intended.