

XCYCLER

SIMPLE & EFFICIENT FOR A FULL RANGE OF APPLICATIONS

Finally, a machine that can do it all. The XCyclor is the answer for processing large volumes of full plastic or aluminum liquid containers.

The complete XCyclor system (tipper, perforator, & baler) cycles quickly and safely. With dual 8" bore hydraulic cylinders the XCyclor (Model 2540) develops up to 250,000 lbs. of force to drive the liquids out and to ensure optimum bale density.



127 N. Water St. Hopkins, MI 49328
800-253-0532
www.sebrightproducts.com

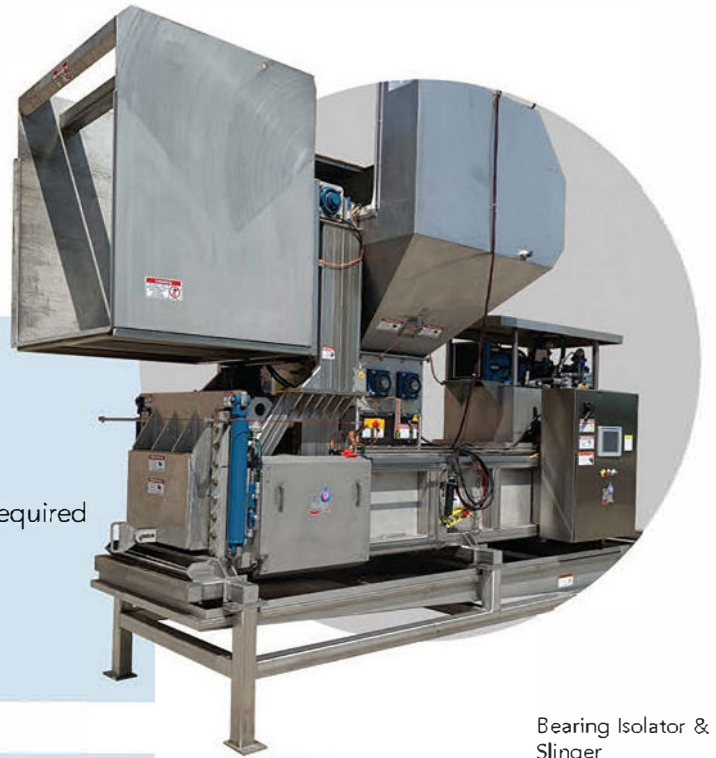


Perforate, crush, & bale liquid containers in one clean operation

- >95% Average liquid removal by weight
- Spray shields keep liquids off your floors
- Processes a 275 gallon tote in less than a minute

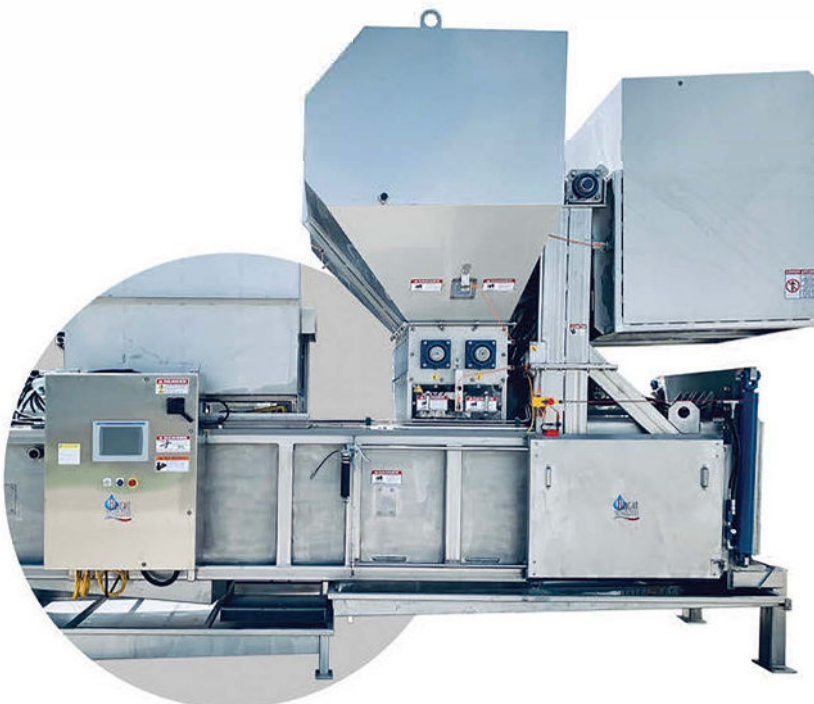
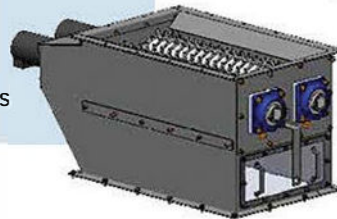
Features & Benefits

- Stainless steel construction
- Sealed design / Clean operation
- Low labor requirements / Single operator required
- Low energy requirements
- CAT 3 safety interlocks
- Allen Bradley electrical controls
- Compact space saving design



Container Perforator

- Stainless steel construction
- Dual hydraulic motor direct drive
- Rugged 3/8" thick stainless steel teeth
- Bearing isolators (better seal liquids)
- Removable polycarbonate viewing windows



Safety Features

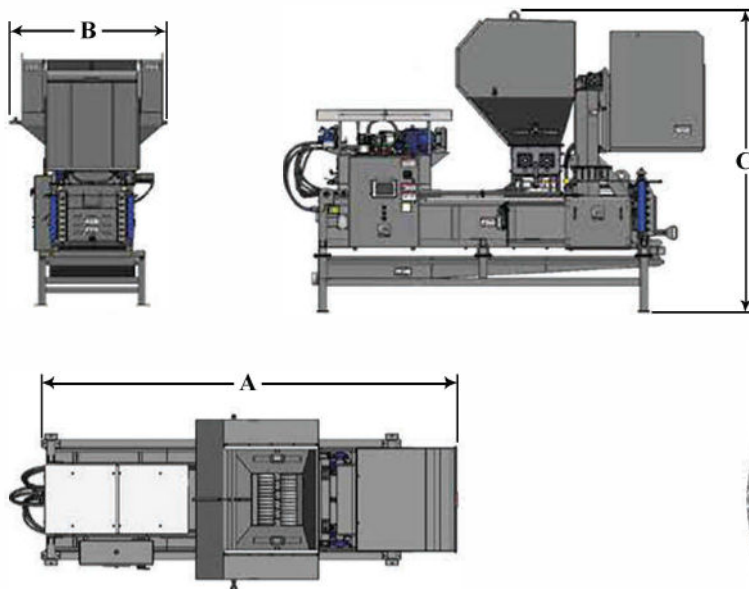
- CAT 3 bale chamber splash guards
- CAT 3 rope pull tipper & door perimeter
- Cylinder controlled vertical bale door insures a safer operations.
- System designed to keep the operator on the forklift
- Bale door manual lock out (up position)

Hydraulic Power Unit

- Pressure compensated piston pump
- Stainless steel hydraulic tank
- Oil cooler (with over temp fault)
- Independent tipper vane pump
- Dirty filter sensor and fault
- Low oil sensor and fault
- Secondary containment with drain for oil pan

Space Saving Design

- Load and bale eject from same direction
- Vertical chamber door
- Sliding splash covers
- Deck mounted hydraulic unit



* All dimensional data for reference only

* Due to product improvement, the manufacturer reserves the right to alter, or amend, without notice, any of these specifications and dimensions.

Dimensional Data and Specifications

Model	general	electrical	hydraulics
BBA 2528	Length (A): 220" Width (B): 93.5" Height (C): 193"* Weight: 19,000 lbs. Bale Dim: 30" x 18" x 36" Liquid Capacity: 300 gal. Cycle Time: 58 sec.** Bale weight: **** PET bottles: 300 lbs. Aluminum cans: 260 lbs.	Motor: 15HP Power: 230/460V 3PH Amps: 25/50 PLC Type: AB MicroLogix 1400 HMI Type: AB 12" Panel View Safety Circuit: CAT3 Main Enclosure NEMA 4X SS Approvals: UL Listed Main Panel	Main Pump: 21 GPM Piston Tipper Pump: 5 GPM Vane Hyd. Pressure: 2,500 lbs (max) Ram Cylinders: (1) 7" x 65" Tipper Cylinders: (2) 3" x 23" Ram Force: 96,000 lbs (max)
BBA 2540	Length (A): 221" Width (B): 93.5" Height (C): 193"* Weight: 26,000 lbs. Bale Dim: 42" x 30" x 48" Liquid Capacity: 240 gal. Cycle Time: 58 sec.** Bale weight: **** PET bottles: 900 lbs. Aluminum cans: 800 lbs.	Motor: 30HP Power: 230/460V 3PH Amps: 40/80 PLC Type: AB MicroLogix 1400 HMI Type: AB 12" Panel View Safety Circuit: CAT3 Main Enclosure NEMA 4X SS Approvals: UL Listed Main Panel	Main Pump: 47 GPM Piston Tipper Pump: 5 GPM Vane Hyd. Pressure: 2,500 lbs (max) Ram Cylinders: (2) 8" x 82" Tipper Cylinders: (2) 3" x 23" Ram Force: 250,000 lbs (max)

* With dumper fully extended

** Cycle time varies with application

*** Includes automatic cart rinse cycle

**** Bale weights are approximate and may vary by application and container size

While Sebright Products, Inc., strives to make the information provided on processing of your waste or recycling stream, as timely and accurate as possible, the company makes no claims, promises or guarantees about the accuracy, completeness, or adequacy of any of the provided information, and expressly disclaims liability of errors and omissions in the content of the information, or analysis provided to your company. It is solely the responsibility of each recipient of the information Sebright Products, Inc., has provided to satisfy itself as to the accuracy of the information provided by Sebright Products, Inc., and as to the efficacy of the product(s) for the use(s) intended.