



# Avermann

## Horizontal auto-tie baler TYPE AVOS 1211

Maximum performance –  
minimum space  
required!

**The horizontal baler type AVOS 1211 allows for high impact in the smallest spaces.**

The very compact design of the baler allows easy positioning in working environments with minimal space. The machine also combines modern technology with a very robust design. Thus, you benefit from a long lifetime with high throughput and performance potential. The AVOS 1211 leads the pack in simple and safe handling - with fully automated operation and the proven 4-fold vertical binding.

Optional high torque, slow speed shredder available, this technology will accept boxes up to 7' wide!

**Sebright Products, Inc.**

Hopkins, Michigan, 49328, US

Phone +1-269-793-7183 . Fax +1-269-793-4022

sebweb@sebrightproducts.com . [www.sebrightproducts.com](http://www.sebrightproducts.com)



Horizontal baler TYPE AVOS 1211-22/60

# Horizontal auto-tie baler TYPE AVOS 1211

## Technical Data

## Options

### You specify the details – for an optimal setup:

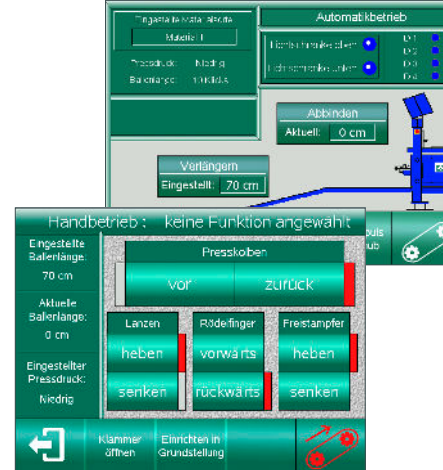
- › 880 lb wire coil holders
- › Feeding conveyor for continuous and constant feeding
- › Size reducing shredder to allow for large box sizes in small opening
- › Hook base frame

### Your benefits:

- › **Robust:** Stable, torsion-resistant design
- › **Flexible:** Individual equipment options
- › **Safe:** Vertical 4-fold binding
- › **Space saving:** Compact design
- › **Reliable:** Proven technology with more than 40 years of experience

## Industry leading warranty:

- › 3 years parts & labor included
- › Years 4 & 5 available for purchase



Touch screen display with multiple functions



AVOS 1211 with hook base frame

### Overview of technology

#### AVOS 1211-22/60

Machine length	228 inches (19')
Machine width	71 inches (5'11")
Machine height	118 inches (9'10")
Feed opening	47 inches x 43 inches
Dead weight approx.	18,700 lbs
Bale dimensions (W x H)	43 inches x 28 inches
Bale length	adjustable
Bale weight* - up-to	1,100 lbs
Binding system	4-fold, vertically
Channel adjustment**	semi-automatically
Cycle time (empty)	20 sec
Throughput @ 299 lbs/cubic yd, up to	8.6 t/h
Ram face psi	113 psi
<b>Press force</b>	<b>132,000 lbs force</b>
<b>Motor size</b>	<b>30 hp</b>
<b>Cylinder size:</b>	<b>5" bore, 4" rod</b>

\* depending on bale length and material,

\*\* top channel plate fully automatic, side channel plates manually

Adjustable bale length; binding: 4-fold vertical;  
Electrical connection: 460 volt, 3 phase, 50 Hz;  
Fuse protection on site: 60 A